

Technical data sheet



Product features

Bain marie electric GN 1/1 - 150 without cabinet

| | | |
|--------------|-----------------|---------|
| Model | SAP Code | 0000075 |
|--------------|-----------------|---------|



- Drain: Yes
- Safety drain: Yes
- Material: AISI 304 top plate, AISI 430 cladding
- Protection of controls: IPX4
- Maximum device temperature [°C]: 90

| | | | |
|------------------------|---------|-------------------------------|--------------------|
| SAP Code | 0000075 | Power electric [kW] | 1.500 |
| Net Width [mm] | 328 | Loading | 230 V / 1N - 50 Hz |
| Net Depth [mm] | 609 | Number of GN / EN | 1 |
| Net Height [mm] | 290 | GN / EN size in device | GN 1/1 |
| Net Weight [kg] | 10.00 | GN device depth | 150 |

Technical data sheet



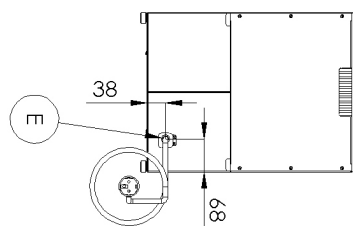
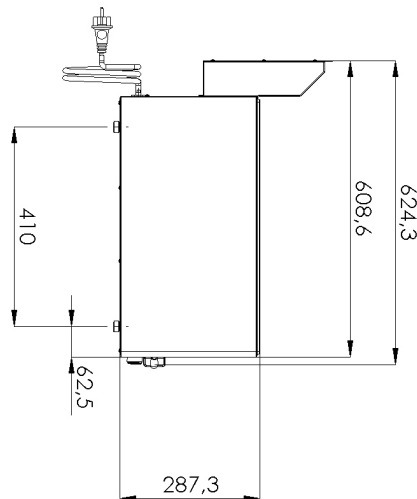
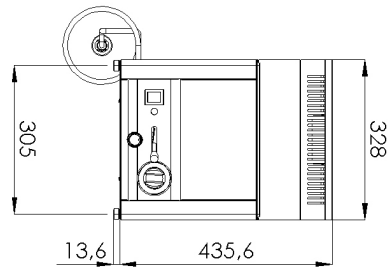
Technical drawing

Bain marie electric GN 1/1 - 150 without cabinet

Model

SAP Code

0000075



Technical data sheet



Product benefits

Bain marie electric GN 1/1 - 150 without cabinet

Model

SAP Code

0000075

1

All-stainless design

long life
resistance of AISI 304 stainless steel material
the material does not cut

- savings on service interventions
- easy cleaning and maintenance of equipment

2

Degree of protection of the control elements IPX4

maintenance-free system
resistance to splash water
long life

- savings on service interventions
- greater job security for staff

3

Manipulation

easy portability

- flexibility in the kitchen, can be used for banquets

Technical data sheet



Technical parameters

Bain marie electric GN 1/1 - 150 without cabinet

Model

SAP Code

00000075

1. SAP Code:

00000075

2. Net Width [mm]:

328

3. Net Depth [mm]:

609

4. Net Height [mm]:

290

5. Net Weight [kg]:

10.00

6. Gross Width [mm]:

650

7. Gross depth [mm]:

366

8. Gross Height [mm]:

440

9. Gross Weight [kg]:

12.00

10. Device type:

Electric unit

11. Construction type of device:

Table top

12. Power electric [kW]:

1.500

13. Loading:

230 V / 1N - 50 Hz

14. Protection of controls:

IPX4

15. Material:

AISI 304 top plate, AISI 430 cladding

16. Indicators:

operation and warm-up

17. Worktop type:

Molded - comfortable cleaning maintenance

18. Worktop material:

AISI 304

19. Worktop Thickness [mm]:

0.80

20. Basin dimensions [mm x mm x mm]:

328 x 609 x 290

21. Maximum device temperature [°C]:

90

22. Minimum device temperature [°C]:

30

23. Adjustable feet:

Yes

24. Number of basins:

1

25. Basin material:

AISI 304 - High quality stainless steel

26. Drain:

Yes

27. Safety drain:

Yes

28. Number of GN / EN:

1

Technical data sheet



Technical parameters

Bain marie electric GN 1/1 - 150 without cabinet

Model

SAP Code

0000075

29. GN / EN size in device:

GN 1/1

31. Heating location:

Under the bottom of the bathtub

30. GN device depth:

150

32. Cross-section of conductors CU [mm²]:

0,5

- Výkon (kW): 2,4-3,3 (230 V)